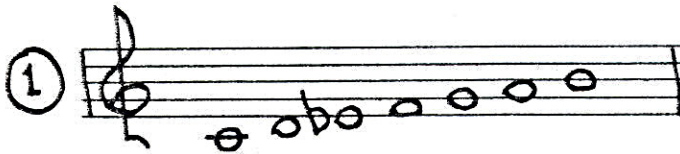


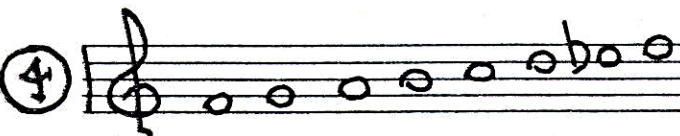
# MODES OF ASCENDING MELODIC MINOR

NAME:

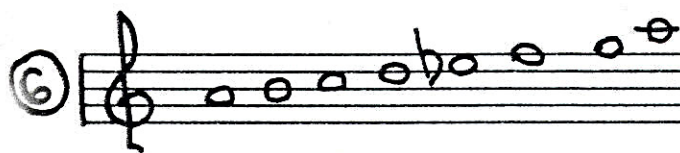
C ascending melodic minor



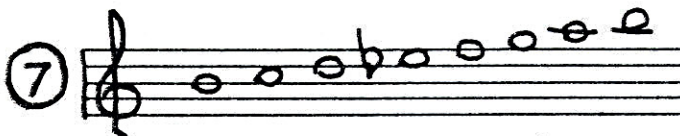
Eb lydian augmented



F lydian dominant



A locrian #2



B diminished-whole tone

[modes 2 (phrygian #6) and 5 (mixolydian b6) are omitted here, because they are seldom used]

Any of the above modes will perfectly match the color of each of the following chords: C- $\Delta$ , F $^7_{+4}$ , B $^{\#9}_{+5}$ , A $\phi$ , and E $b\Delta_{+5}$ .

## NOTE-OF-CHORD APPLICATION

mode #	- $\Delta$	$^7_{+4}$	$\phi$	$\Delta_{+5}$	$^{\#9}_{+5}$	mode name
①	root	5th	3rd	6th	b2nd (b9)	asc. m.m.
③	3rd	7th	b5th	root	3rd	lyd. aug.
④	4th	root	b6th (b13)	2nd (9th)	+4 (+11)	lyd. dom.
⑥	6th	3rd	root	+4	7th	locrian #2
⑦	7th	+4 (+11)	9th (2nd)	+5	root	dim.-wt.