

PRACTICE PROGRESSIONS

1 THRU 5 ARE ROOT MOTIONS ONLY, NO QUALITIES ARE ASSIGNED. THESE PROGRESSIONS WILL BE USED FOR PRACTICING VARIOUS CHORD/SCALE QUALITIES.

D G C F B \flat E \flat

1

7

Ab C# F# B E A

2

13

D Eb E F F# G

19

Ab A B \flat B C C#

3

25

D C# C B B \flat A

31

Ab G F# F E E \flat

4

37

D E F# A \flat B \flat C

43

E \flat F G A B C#

5

49

D F A \flat B D# F#

55

A C E G B \flat C#

6 THRU 13 - MAJOR II V7 I

61

D- G7 C C- F7 Bb

Bb- Eb7 Ab Ab- Db7 Gb

69

F#- B7 E E- A7 D

77

Eb- Ab7 Db Db- Gb7 B

85

B- E7 A A- D7 G

93

G- C7 F F- Bb7 Eb

101

108

D- G7 C C- F7 Bb Bb- Eb7 Ab Ab- Db7 Gb

F#- B7 E E- A7 D Eb- Ab7 Db Db- Gb7 B

117

C#- F#7 B B- E7 A B- E7 A A- D7 G

125

8

133 D- G7 C Eb- Ab7 Db

141 E- A7 D F- Bb7 Eb

149 F#- B7 E G- C7 F

157 Ab- Db7 Gb A- D7 G

165 Bb- Eb7 Ab B- E7 A

173 C- F7 Bb C#- F#7 B

9

181 D- G7 C Eb- Ab7 Db E- A7 D F- Bb7 Eb

189 F#- B7 E G- C7 F Ab- Db7 Gb A- D7 G

197 Bb- Eb7 Ab B- E7 A C- F7 Bb Db- Gb7 B

10

205

D- G7 C- F7 Bb- Eb7 Ab- Db7

Gb- B7 E- A7 Eb- Ab7 Db- Gb7

213

B- E7 A- D7 G- C7 F- Bb7

221

11

229

D- G7 C- F7 Bb- Eb7 Ab- Db7 Gb- B7 E- A7

Eb- Ab7 Db- Gb7 B- E7 A- D7 G- C7 F- Bb7

235

12

241

D- G7 Eb- Ab7 E- A7 F- Bb7 F#- B7 G- C7

Ab- Db7 A- D7 Bb- Eb7 B- E7 C- F7 Db- Gb7

247

13

253


D- G7 Db- Gb7 C- F7 B- E7 Bb- Eb7 A- D7

Ab- Db7 G- C7 F#- B7 F- Bb7 E- A7 Eb- Ab7

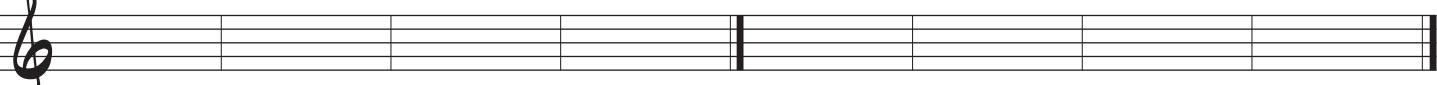
259

14 THRU 21 - MINOR II V7 I


D \emptyset G7b9 C- C \emptyset F7b9 Bb-

265
14 

Bb \emptyset Eb7b9 Ab- Ab \emptyset Db7b9 Gb-

273 


F# \emptyset B7b9 E- E \emptyset A7b9 D-

281 


D \emptyset G7b9 C- C \emptyset F7b9 Bb-

289 

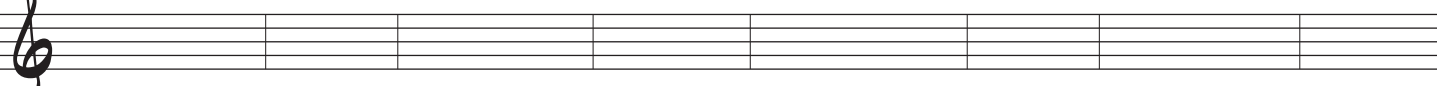
Bb \emptyset Eb7b9 Ab- Ab \emptyset Db7b9 Gb-

297 


F# \emptyset B7b9 E- E \emptyset A7b9 D-

305 

D \emptyset G7b9 C- C \emptyset F7b9 Bb- Bb \emptyset Eb7b9 Ab- Ab \emptyset Db7b9 Gb-

313
15 

F# \emptyset B7b9 E- E \emptyset A7b9 D- C# \emptyset F#7b9 B- B \emptyset E7b9 A-

321 

A \emptyset D7b9 G- G \emptyset C7b9 F- F \emptyset Bb7b9 Eb- Eb \emptyset Ab7b9 Db-

329 

D \emptyset G7b9 C- Eb \emptyset Ab7b9 Db-

E \emptyset A7b9 D- F \emptyset Bb7b9 Eb-

F# \emptyset B7b9 E- G \emptyset C7b9 F-

Ab \emptyset Db7b9 Gb- A \emptyset D7b9 G-

Bb \emptyset Eb7b9 Ab- B \emptyset E7b9 A-

C \emptyset F7b9 Bb- C# \emptyset F#7b9 B-

D \emptyset G7b9 C- Eb \emptyset Ab7b9 Db- E \emptyset A7b9 D- F \emptyset Bb7b9 Eb-

F# \emptyset B7b9 E- G \emptyset C7b9 F- Ab \emptyset Db7b9 Gb- A \emptyset D7b9 G-

Bb \emptyset Eb7b9 Ab- B \emptyset E7b9 A- C \emptyset F7b9 Bb- C# \emptyset F#7b9 B-

408

18 $D\emptyset$ $G7b9$ $C\emptyset$ $F7b9$ $Bb\emptyset$ $Eb7b9$ $Ab\emptyset$ $Db7b9$

417

$Gb\emptyset$ $B7b9$ $E\emptyset$ $A7b9$ $Eb\emptyset$ $Ab7b9$ $Db\emptyset$ $F\#7b9$

425

$C\#\emptyset$ $F\#7b9$ $B\emptyset$ $E7b9$ $A\emptyset$ $D7b9$ $G\emptyset$ $C7b9$

433

19 $D\emptyset$ $G7b9$ $C\emptyset$ $F7b9$ $Bb\emptyset$ $Eb7b9$ $Ab\emptyset$ $Db7b9$ $Gb\emptyset$ $B7b9$ $E\emptyset$ $A7b9$

439

$Eb\emptyset$ $Ab7b9$ $Db\emptyset$ $Gb7b9$ $B\emptyset$ $E7b9$ $A\emptyset$ $D7b9$ $G\emptyset$ $C7b9$ $F\emptyset$ $Bb7b9$

445

20 $D\emptyset$ $G7b9$ $Eb\emptyset$ $Ab7b9$ $E\emptyset$ $A7b9$ $F\emptyset$ $Bb7b9$ $Gb\emptyset$ $B7b9$ $G\emptyset$ $C7b9$

451

$Ab\emptyset$ $Db7b9$ $A\emptyset$ $D7b9$ $Bb\emptyset$ $Eb7b9$ $B\emptyset$ $E7b9$ $C\emptyset$ $F7b9$ $Db\emptyset$ $Gb7b9$

457

21 $D\emptyset$ $G7b9$ $Db\emptyset$ $Gb7b9$ $C\emptyset$ $F7b9$ $B\emptyset$ $E7b9$ $Bb\emptyset$ $Eb7b9$ $A\emptyset$ $D7b9$

463

$Ab\emptyset$ $Db7b9$ $G\emptyset$ $C7b9$ $Gb\emptyset$ $B7b9$ $F\emptyset$ $Bb7b9$ $E\emptyset$ $A7b9$ $Eb\emptyset$ $Ab7b9$

469



473



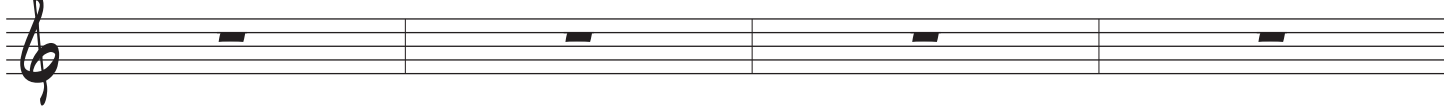
477



481



485



489



493



497



501

