

PRACTICE PROGRESSIONS

1 THRU 5 ARE ROOT MOTIONS ONLY, NO QUALITIES ARE ASSIGNED. THESE PROGRESSIONS WILL BE USED FOR PRACTICING VARIOUS CHORD/SCALE QUALITIES.

A D G C F B \flat

1

7

E \flat A \flat C \sharp F \sharp B E

2

13

A B \flat B C C \sharp D

19

E \flat E F F \sharp G G \sharp

3

25

A A \flat G F \sharp F E

31

E \flat D D \flat C B B \flat

4

37

A B D \flat E \flat F G

43

B \flat C D E F \sharp A \flat

5

49

A C E \flat F \sharp B \flat D \flat

55

E G B D F A \flat

6 THRU 13 - MAJOR II V7 I

61
6

A- D7 G G- C7 F

F- Bb7 Eb Eb- Ab7 Db

69
C#- F#7 B B- E7 A

77
Bb- Eb7 Ab Ab- Db7 Gb

85
F#- B7 E E- A7 D

93
D- G7 C C- F7 Bb

101

108
7

A- D7 G G- C7 F F- Bb7 Eb D#- Ab7 Db

Db- Gb7 B B- E7 A Bb- Eb7 Ab Ab- Db7 Gb

117

G#- C#7 Gb F#- B7 E F#- B7 E E- A7 D

125

8

133 A- D7 G Bb- Eb7 Ab

141 B- E7 A C- F7 Bb

149 C#- F#7 B D- G7 C

157 Eb- Ab7 Db E- A7 D

165 F- Bb7 Eb F#- B7 E

173 G- C7 F Ab- Db7 Gb

9

181 A- D7 G Bb- Eb7 Ab B- E7 A C- F7 Bb

189 C#- F#7 B D- G7 C Eb- Ab7 Db E- A7 D

197 F- Bb7 Eb F#- B7 E G- C7 F Ab- Db7 Gb

10

205

A- D7 G- C7 F- Bb7 Eb- Ab7

Db- Gb7 B- E7 Bb- Eb7 Ab- Db7

213

Gb- B7 E- A7 D- G7 C- F7

221

11

229

A- D7 G- C7 F- Bb7 Eb- Ab7 Db- Gb7 B- E7

Bb- Eb7 Ab- Db7 F#- B7 E- A7 D- G7 C- F7

235

12

241

A- D7 Bb- Eb7 B- E7 C- F7 C#- F#7 D- G7

Eb- Ab7 E- A7 F- Bb7 F#- B7 G- C7 Ab- Db7

247

13

253

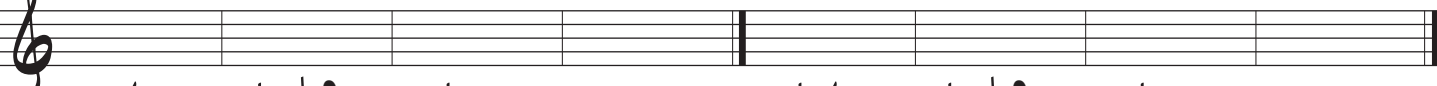
A- D7 Ab- Db7 G- C7 F#- B7 F- Bb7 E- A7

Eb- Ab7 D- G7 C#- F#7 C- F7 B- E7 Bb- Eb7

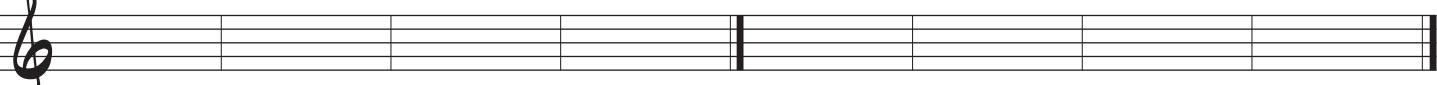
259

14 THRU 21 - MINOR II V7 I


A \emptyset D7b9 G- G \emptyset C7b9 F-

265
14 


F \emptyset Bb7b9 Eb- Eb \emptyset Ab7b9 Db-

273 


C# \emptyset F#7b9 B- B \emptyset E7b9 A-

281 


A \emptyset D7b9 G- G \emptyset C7b9 F-

289 

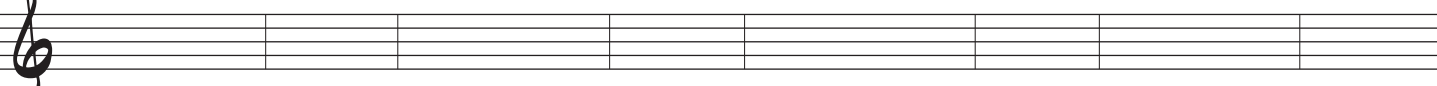
F \emptyset Bb7b9 Eb- Eb \emptyset Ab7b9 Db-

297 


Db \emptyset Gb7b9 B- B \emptyset E7b9 A-

305 

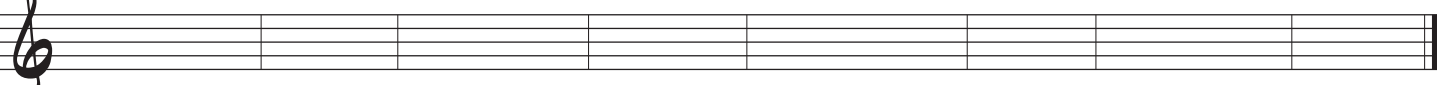
A \emptyset D7b9 G- G \emptyset C7b9 F- F \emptyset Bb7b9 Eb- Eb \emptyset Ab7b9 Db-

313 15 

C# \emptyset F#7b9 B- B \emptyset E7b9 A- Ab \emptyset Db7b9 Gb- F# \emptyset B7b9 E-

321 

E \emptyset A7b9 D- D \emptyset G7b9 C- C \emptyset F7b9 Bb- Bb \emptyset Eb7b9 Ab-

329 

16

337

A \emptyset D7 \flat 9 G- B \flat \emptyset E \flat 7 \flat 9 Ab-

B \emptyset E7 \flat 9 A- C \emptyset F7 \flat 9 B \flat -

345

C \sharp \emptyset F \sharp 7 \flat 9 B- D \emptyset G7 \flat 9 C-

353

E \flat \emptyset Ab7 \flat 9 Db- E \emptyset A7 \flat 9 D-

361

F \emptyset B \flat 7 \flat 9 Eb- F \sharp \emptyset B7 \flat 9 E-

369

G \emptyset C7 \flat 9 F- Ab \emptyset Db7 \flat 9 G \flat -

377

17

385

A \emptyset D7 \flat 9 G- B \flat \emptyset E \flat 7 \flat 9 Ab- B \emptyset E7 \flat 9 A- C \emptyset F7 \flat 9 B \flat -

C \sharp \emptyset F \sharp 7 \flat 9 B- D \emptyset G7 \flat 9 C- E \flat \emptyset Ab7 \flat 9 Db- E \emptyset A7 \flat 9 D-

393

F \emptyset B \flat 7 \flat 9 Eb- F \sharp \emptyset B7 \flat 9 E- G \emptyset C7 \flat 9 F- Ab \emptyset Db7 \flat 9 G \flat -

401

409

18

417

425

433

19

439

445

20

451

457

21

463

469



473



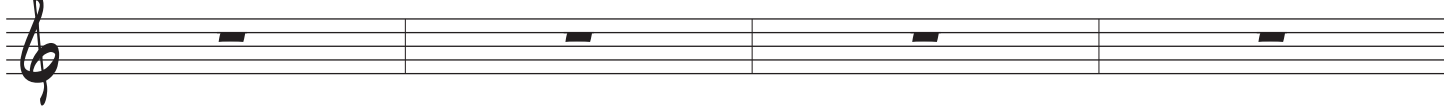
477



481



485



489



493



497



501

