

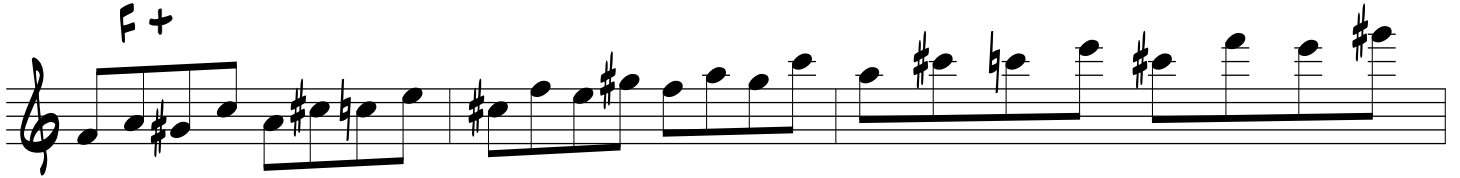
# AUGMENTED SCALES - 3

## THIROS

C+



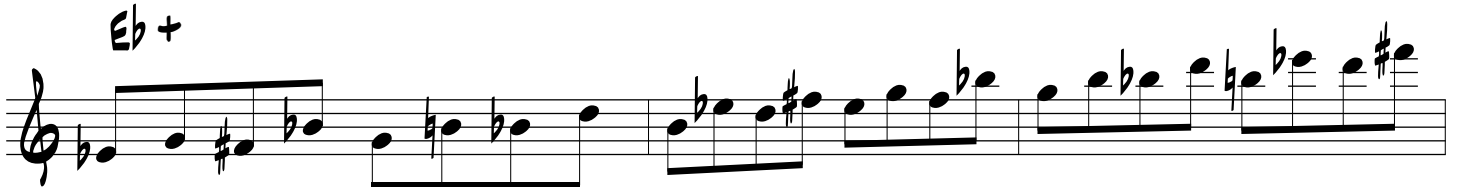
F+



Bb+



Eb+



Ab+

Db+

F#+

B+

E+

Two staves of musical notation for the E+ section. The first staff begins with a treble clef and a key signature of one sharp (F#). The melody consists of eighth and sixteenth notes, with some chords. The second staff continues the melody, ending with a double bar line.

A+

Two staves of musical notation for the A+ section. The first staff begins with a treble clef and a key signature of one sharp (F#). The melody continues with eighth and sixteenth notes. The second staff concludes the section with a double bar line.

D+

Two staves of musical notation for the D+ section. The first staff begins with a treble clef and a key signature of one sharp (F#). The melody features a mix of eighth and sixteenth notes. The second staff ends with a double bar line.

G+

Two staves of musical notation for the G+ section. The first staff begins with a treble clef and a key signature of one sharp (F#). The melody continues with eighth and sixteenth notes. The second staff concludes the section with a double bar line.