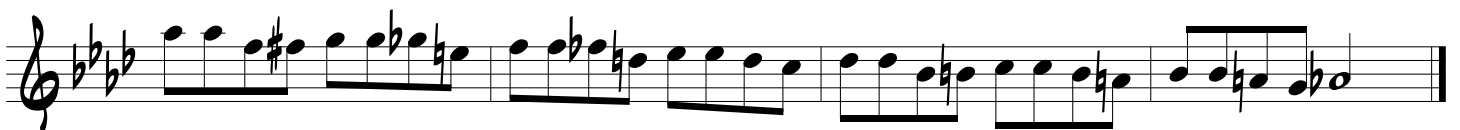
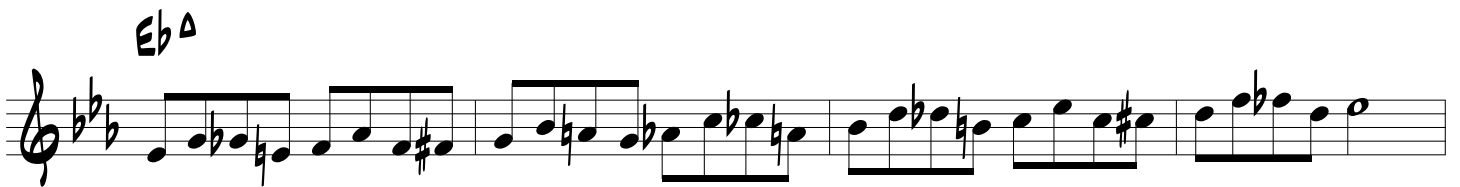
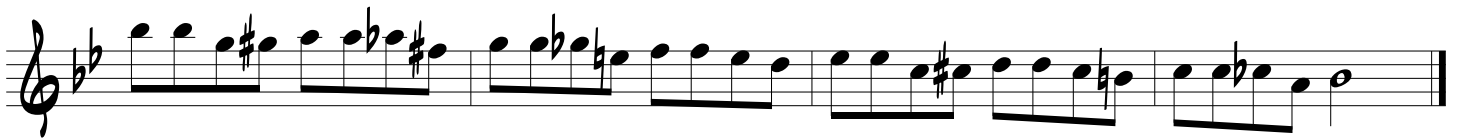


MAJOR SCALES WITH SURROUND TONES

FROM MIKE TITLEBAUM



$D\flat\Delta$

Musical notation for the first system, featuring a treble clef, a key signature of three flats (B-flat, E-flat, A-flat), and a series of eighth and quarter notes with chords. The notation is spread across two staves.

$F\#\Delta$

Musical notation for the second system, featuring a treble clef, a key signature of three sharps (F-sharp, C-sharp, G-sharp), and a series of eighth and quarter notes with chords. The notation is spread across two staves.

$B\Delta$

Musical notation for the third system, featuring a treble clef, a key signature of two sharps (D-sharp, G-sharp), and a series of eighth and quarter notes with chords. The notation is spread across two staves.

$E\Delta$

Musical notation for the fourth system, featuring a treble clef, a key signature of one sharp (F-sharp), and a series of eighth and quarter notes with chords. The notation is spread across two staves.

A Δ

D Δ

G Δ

C Δ