

CONCERT

MINOR II V7 I #1

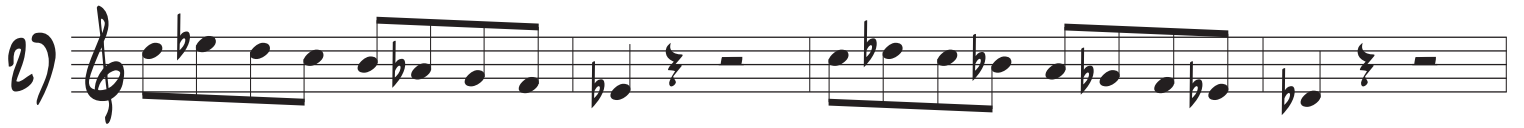
VARIOUS PATTERNS THAT ARE EFFECTIVE

1)

Chord symbols for each measure:

- Staff 1: D \emptyset , G7b9, C-, C \emptyset , F7b9, Bb-
- Staff 2: Bb \emptyset , Eb7b9, Ab-, Ab \emptyset , Db7b9, Gb-
- Staff 3: F# \emptyset , B7b9, E-, E \emptyset , A7b9, D-
- Staff 4: Eb \emptyset , Ab7b9, Db-, Db \emptyset , Gb7b9, B-
- Staff 5: B \emptyset , E7b9, A-, A \emptyset , D7b9, G-
- Staff 6: G \emptyset , C7b9, F-, F \emptyset , Bb7b9, Eb-

D \emptyset G7b9 C- C \emptyset F7b9 Bb-



Bb \emptyset Eb7b9 Ab- Ab \emptyset Db7b9 Gb-



F# \emptyset B7b9 E- E \emptyset A7b9 D-



Eb \emptyset Ab7b9 Db- C# \emptyset F#7b9 B-



B \emptyset E7b9 A- A \emptyset D7b9 G-



G \emptyset C7b9 F- F \emptyset Bb7b9 Eb-



PICK-UP MEASURE

3)

$G\emptyset$ $C7b9$ $F-$
 $F\emptyset$ $Bb7b9$ $Eb-$

3) CAN BE ADAPTED FOR 2 MEASURES

$D\emptyset$ $G7b9$ $C-$ $C\emptyset$ $F7b9$ $Bb-$

$D\emptyset$ $G7b9$ $C-$ $C\emptyset$ $F7b9$ $Bb-$
 $Bb\emptyset$ $Eb7b9$ $Ab-$ $Ab\emptyset$ $Db7b9$ $Gb-$

$F\#\emptyset$ $B7b9$ $E-$ $E\emptyset$ $A7b9$ $D-$

$Eb\emptyset$ $Ab7b9$ $Db-$ $C\#\emptyset$ $F\#7b9$ $B-$

$B\emptyset$ $E7b9$ $A-$ $A\emptyset$ $D7b9$ $G-$

$G\emptyset$ $C7b9$ $F-$ $F\emptyset$ $Bb7b9$ $Eb-$

5 CHET BAKER IDEA 1

5)

D \emptyset G7b9 C- C \emptyset F7b9 Bb-

5)

Bb \emptyset Eb7b9 Ab- Ab \emptyset Db7b9 Gb-

F# \emptyset B7b9 E- E \emptyset A7b9 D-

Eb \emptyset Ab7b9 Db- C# \emptyset F#7b9 B-

B \emptyset E7b9 A- A \emptyset D7b9 G-

G \emptyset C7b9 F- F \emptyset Bb7b9 Eb-

CHET BAKER IDEA 2

D \emptyset G7b9 C- C \emptyset F7b9 Bb-

6)

Bb \emptyset Eb7b9 Ab- Ab \emptyset Db7b9 Gb-

F# \emptyset B7b9 E- E \emptyset A7b9 D-

Handwritten musical notation for six staves, each with a chord symbol above it. The notation is in treble clef with a 7/8 time signature. The chords are: Eb \emptyset , Ab7b9, Db-, C# \emptyset , F#7b9, B-, B \emptyset , E7b9, A-, A \emptyset , D7b9, G-, G \emptyset , C7b9, F-, F \emptyset , Bb7b9, Eb-.

CHET BAKER IDEA 3

Handwritten musical notation for seven staves, each with a chord symbol above it. The notation is in treble clef with a 7/8 time signature. The chords are: D \emptyset , G7b9, C-, C \emptyset , F7b9, Bb-, Bb \emptyset , Eb7b9, Ab-, Ab \emptyset , Db7b9, Gb-, F# \emptyset , B7b9, E-, E \emptyset , A7b9, D-, D-.

Handwritten musical notation for six staves, each with a chord symbol above it. The staves contain melodic lines with various notes and rests.

- Staff 1: $E_b\emptyset$, A_b7b9 , D_b-
- Staff 2: $C\#\emptyset$, $F\#7b9$, $B-$
- Staff 3: $B\emptyset$, $E7b9$, $A-$
- Staff 4: $A\emptyset$, $D7b9$, $G-$
- Staff 5: $G\emptyset$, $C7b9$, $F-$
- Staff 6: $F\emptyset$, $Bb7b9$, E_b-

270

A single staff of musical notation with a treble clef and a whole rest.