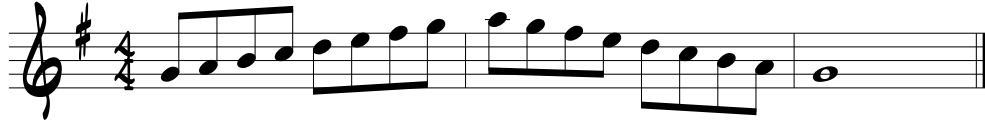


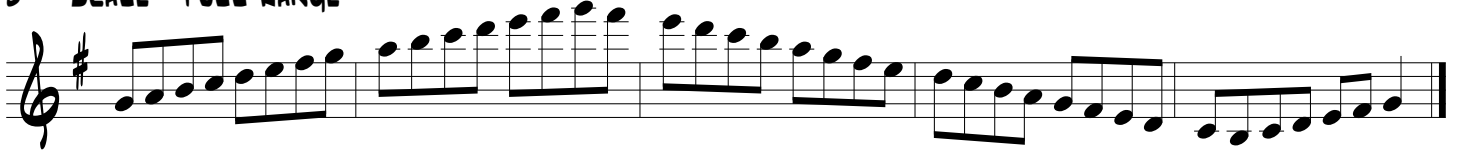
PRACTICE ROUTINE - MAJOR

PRACTICE IN ALL 12 KEYS

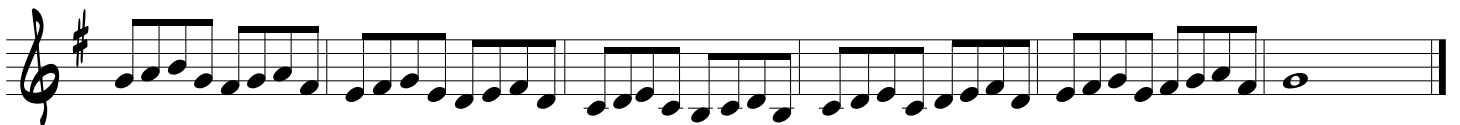
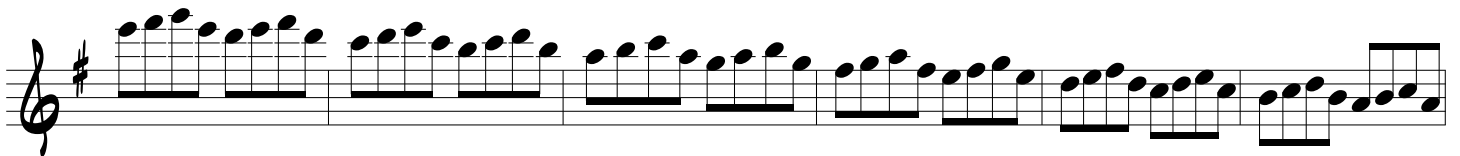
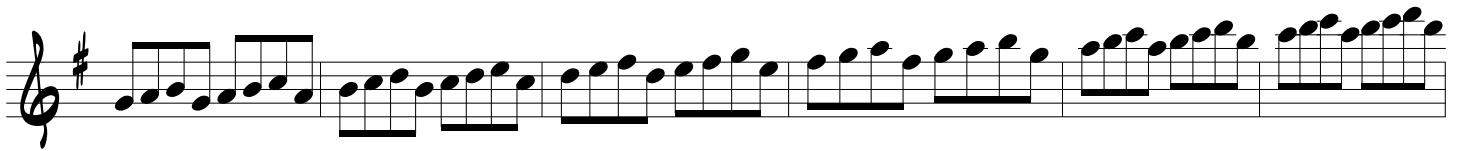
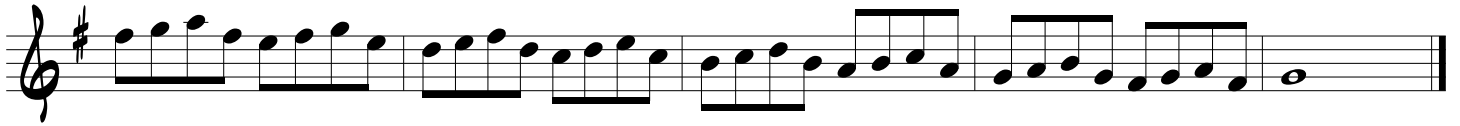
1 SCALE



2 SCALE - FULL RANGE



3 1-2-3-1



5 1-3-2-1

Exercise 5 is written on two staves in treble clef with a key signature of one sharp (F#). The first staff contains four measures of music: the first two measures feature a sequence of eighth notes (F#, G, A, B), and the next two measures feature a descending sequence of eighth notes (B, A, G, F#). The second staff continues with four measures: the first two measures feature a descending sequence of eighth notes (E, D, C, B), and the final two measures feature an ascending sequence of eighth notes (B, C, D, E) ending with a whole note. A double bar line is at the end of the second staff.

6 1-3-2-1 - FULL RANGE

Exercise 6 is written on four staves in treble clef with a key signature of one sharp (F#). The first staff contains four measures of eighth notes: the first two are ascending (F#, G, A, B) and the last two are descending (B, A, G, F#). The second staff contains four measures of sixteenth notes: the first two are ascending (F#, G, A, B) and the last two are descending (B, A, G, F#). The third staff contains four measures of thirty-second notes: the first two are ascending (F#, G, A, B) and the last two are descending (B, A, G, F#). The fourth staff contains four measures of eighth notes: the first two are ascending (F#, G, A, B) and the last two are descending (B, A, G, F#), ending with a whole note. A double bar line is at the end of the fourth staff.

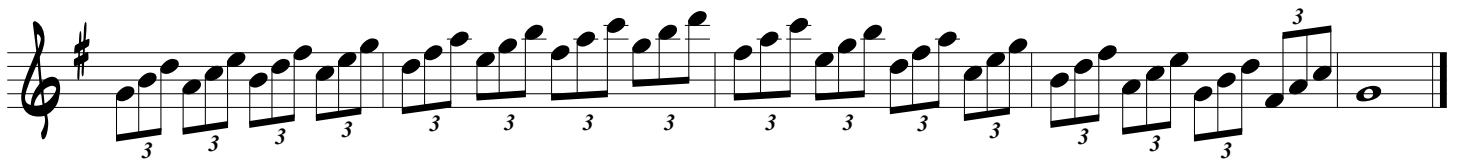
7 1-3-4-2 3-5-6-4

Exercise 7 is written on one staff in treble clef with a key signature of one sharp (F#). It contains four measures of eighth notes. The first two measures feature an ascending sequence (F#, G, A, B), and the last two measures feature a descending sequence (B, A, G, F#), ending with a whole note. A double bar line is at the end of the staff.

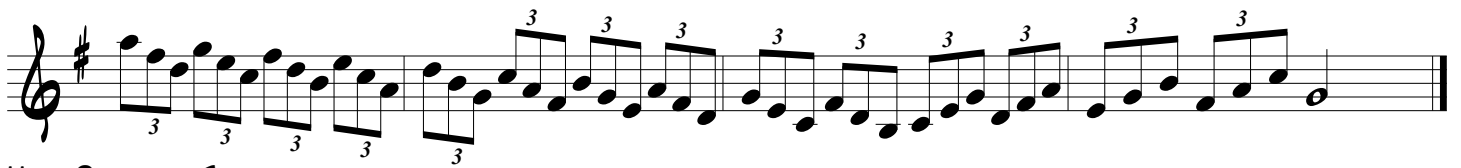
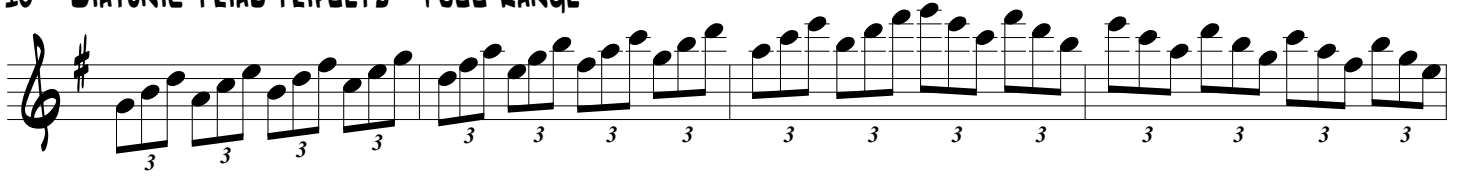
8 1-3-4-2 3-5-6-4 - FULL RANGE

Exercise 8 is written on two staves in treble clef with a key signature of one sharp (F#). The first staff contains four measures of eighth notes: the first two are ascending (F#, G, A, B) and the last two are descending (B, A, G, F#). The second staff contains four measures of sixteenth notes: the first two are ascending (F#, G, A, B) and the last two are descending (B, A, G, F#). The third staff contains four measures of thirty-second notes: the first two are ascending (F#, G, A, B) and the last two are descending (B, A, G, F#). The fourth staff contains four measures of eighth notes: the first two are ascending (F#, G, A, B) and the last two are descending (B, A, G, F#), ending with a whole note. A double bar line is at the end of the fourth staff.

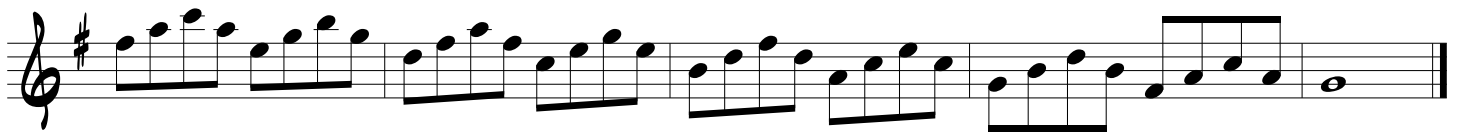
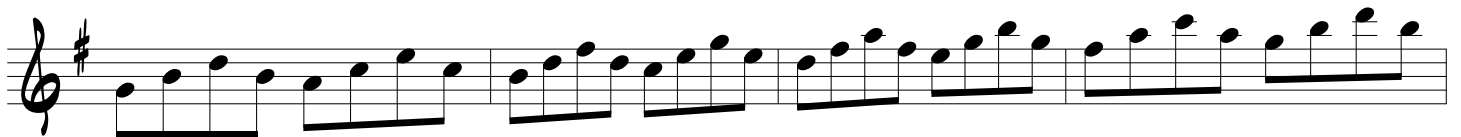
9 DIATONIC TRIAD TRIPLETS - ASCENDING



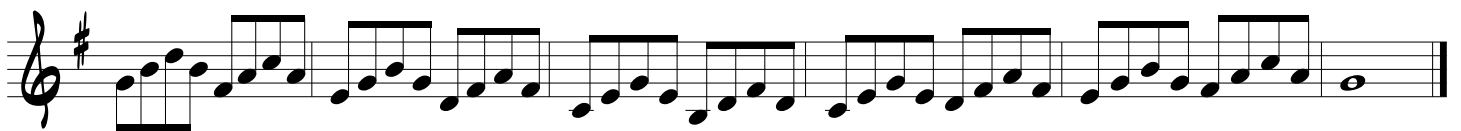
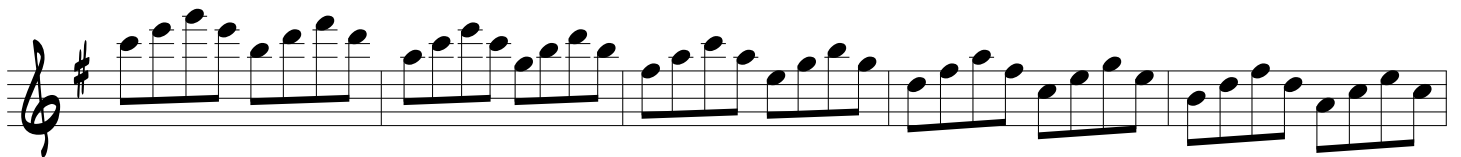
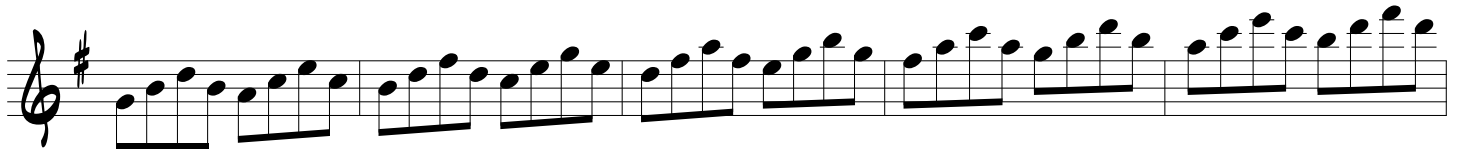
10 DIATONIC TRIAD TRIPLETS - FULL RANGE



11 DIATONIC TRIADS



12 DIATONIC TRIADS - FULL RANGE



13 7THS

Exercise 13, titled "7THS", consists of two staves of music in G major. The first staff contains four measures of eighth-note pairs: G4-A4, A4-B4, B4-C5, and C5-D5. The second staff contains four measures of eighth-note pairs: D5-E5, E5-F5, F5-G5, and G5-A5, followed by a whole note G5 on the final measure.

14 7THS - FULL RANGE

Exercise 14, titled "7THS - FULL RANGE", consists of three staves of music in G major. The first staff contains four measures of eighth-note pairs: G4-A4, A4-B4, B4-C5, and C5-D5. The second staff contains four measures of eighth-note pairs: D5-E5, E5-F5, F5-G5, and G5-A5. The third staff contains four measures of eighth-note pairs: G5-A5, A5-B5, B5-C6, and C6-D6, followed by a whole note G5 on the final measure.