

# PRACTICE ROUTINE - MINOR (MELODIC MINOR ASCENDING)

PRACTICE IN ALL 12 KEYS

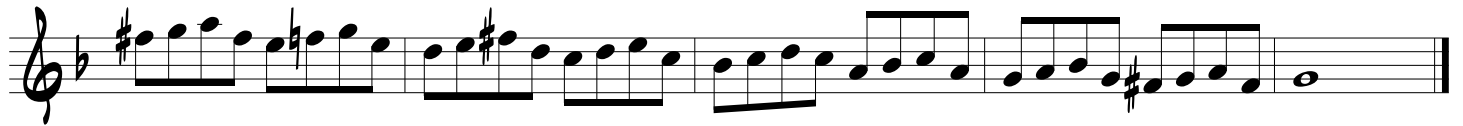
## 1 SCALE



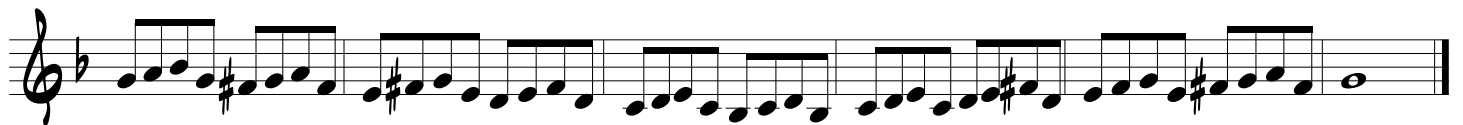
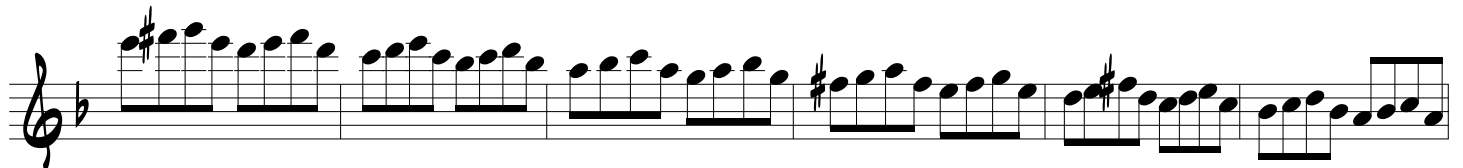
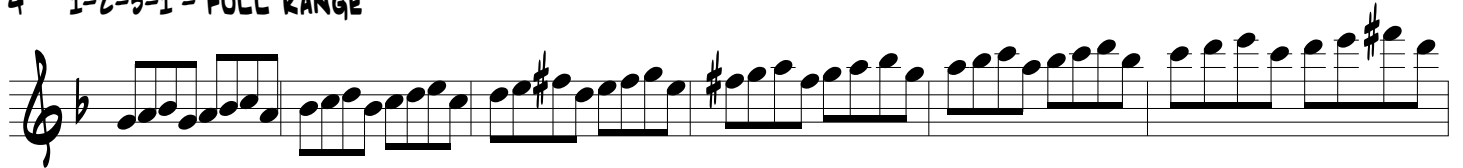
## 2 SCALE - FULL RANGE



## 3 1-2-3-1



## 4 1-2-3-1 - FULL RANGE



5 1-3-2-1

Exercise 5 consists of two staves of music in G major. The first staff contains four measures of eighth-note patterns: G-A-B-A, G-A-B-A, B-A-G-A, and B-A-G-A. The second staff contains four measures: B-A-G-A, B-A-G-A, A-B-A-B, and A-B-A-B. The key signature has one sharp (F#) and the time signature is 4/4.

6 1-3-2-1 - FULL RANGE

Exercise 6 consists of four staves of music in G major, covering a full range. The first staff has four measures of eighth-note patterns: G-A-B-A, G-A-B-A, B-A-G-A, and B-A-G-A. The second staff has four measures: B-A-G-A, B-A-G-A, A-B-A-B, and A-B-A-B. The third staff has four measures: A-B-A-B, A-B-A-B, G-A-B-A, and G-A-B-A. The fourth staff has four measures: G-A-B-A, G-A-B-A, B-A-G-A, and B-A-G-A. The key signature has one sharp (F#) and the time signature is 4/4.

7 1-3-4-2 3-5-6-4

Exercise 7 consists of one staff of music in G major. It contains four measures of eighth-note patterns: G-A-B-A, B-A-G-A, B-A-G-A, and B-A-G-A. The key signature has one sharp (F#) and the time signature is 4/4.

8 1-3-4-2 3-5-6-4 - FULL RANGE

Exercise 8 consists of two staves of music in G major, covering a full range. The first staff has four measures of eighth-note patterns: G-A-B-A, B-A-G-A, B-A-G-A, and B-A-G-A. The second staff has four measures: B-A-G-A, B-A-G-A, A-B-A-B, and A-B-A-B. The key signature has one sharp (F#) and the time signature is 4/4.

9 DIATONIC TRIAD TRIPLETS - ASCENDING

10 DIATONIC TRIAD TRIPLETS - FULL RANGE

11 DIATONIC TRIADS

12 DIATONIC TRIADS - FULL RANGE

13 7THS

Exercise 13, titled "7THS", consists of two staves of music. The first staff contains four measures of music, and the second staff contains four measures. The key signature has one flat (Bb) and the time signature is 4/4. The melody is a sequence of eighth notes, with a sharp sign (#) placed above the notes in the first three measures of each staff, indicating a chromatic scale. The notes in the first staff are Bb, C, D, E, F, G, A, Bb. The notes in the second staff are Bb, C, D, E, F, G, A, Bb. The final note of the second staff is a whole note Bb.

14 7THS - FULL RANGE

Exercise 14, titled "7THS - FULL RANGE", consists of three staves of music. The first staff contains four measures, the second staff contains four measures, and the third staff contains five measures. The key signature has one flat (Bb) and the time signature is 4/4. The melody is a sequence of eighth notes, with a sharp sign (#) placed above the notes in the first three measures of each staff, indicating a chromatic scale. The notes in the first staff are Bb, C, D, E, F, G, A, Bb. The notes in the second staff are Bb, C, D, E, F, G, A, Bb. The notes in the third staff are Bb, C, D, E, F, G, A, Bb. The final note of the third staff is a whole note Bb.